

# Rice County 4-H News...Feb. 2019



## 4-H Day Entries

Don't forget 4-H Day entries are due February 13! Please complete the 4-H Day entry form. If you have questions please feel free to give us a call, but entries in written form are requested so there is no miscommunication. The schedule will be sent out on about February 15 and we will post it to Facebook and will email it to all 4-H families. If you have time requests, please note that on the entry form and we will do our best. Please respect the fact that we cannot fit everyone in at 5 pm especially if you plan to be in 3 events. Looking forward to receiving your entries!



2019 4-H Club Days is February 18 at Lyons High School. We are offering the chance for the 13 and up to do the ARI (application, resume and interview). Great opportunity to hone up on those much needed skills. Jr Leaders will be in charge of the Pickle Power this year.

## CIA...There still time to enroll

February 1 is deadline for CIA (Citizenship in Action). We have 8 youth signed up so far. What a great way to learn how the state government works.

## CLOVERBUD MEETINGS HAVE BEEN SCHEDULED...

February 11 @ 6:15

March 11 @ 6:15

April 8 @ 6:15

May 13 @ 6:15



All meetings will be held at the Extension Building, with the Junior Leaders being in charge. If you know of someone who is interested in attending please encourage them.

YQCA: This coming Monday February 4th at 7 pm at the extension building. All youth must attend if you have an animal for a 4-H project. <https://yqca.learn-grow.io/>

## Northwest 4-H Judging- Super Saturday

Northwest 4-H Judging is a statewide 4-H and FFA event that was held March 23, 2019. Youth take part in Crops, Entomology, Horticulture, Life Skills, Livestock and Photography contests. There are also project workshops and a 4-H Volunteer Gathering. Don't miss out on all of the great learning opportunities that Super Saturday has to offer!!

<https://cottonwood.k-state.edu/ellis-county4h/4-hevents/>

## **TRACTOR SAFETY COURSES...**

Keeping you in tune with options available to you for attending tractor safety courses in time for summer work opportunities.

**Tractor Safety Operator's Course**  
**Saturday, March 16 - 8:30 a.m. - 4:30 p.m.** Prairieland Partners LLC  
2401 E Northview, McPherson KS 67460

**PURPOSE OF COURSE & TEST:** To provide teenagers with a fuller appreciation and awareness of needed safety practices around tractors and farm machinery. As well as provide 14 & 15 year old youth an opportunity to receive a tractor operator's permit, required by the Child Labor Regulations in regard to agricultural hazardous occupations before they can be employed to operate a tractor.

**WHO MAY PARTICIPATE:** 14 & 15 year olds. Those completing the course and test will receive an operator's certificate upon completion. Those who are 16 or older do not need an operator's certificate, but are welcomed and encouraged to attend.

**SCHEDULE:** Tractor & Farm Machinery Safety Instruction will be given from 8:30 a.m.—4:30 p.m., Saturday, March 16. Classes will take place at Prairieland Partners LLC, 2401 E Northview, McPherson KS 67460.

**COST:** \$15.00 - made payable to

the McPherson County Extension Council. Free lunch will be provided by Prairieland Partners LLC.

**ENROLLMENT:** All participants will need to complete a registration form in order to participate. Youth must pre-register and pick up their manual prior to the class. Registration forms can be filled out or picked up at the Extension Office when picking up the manual. **PRE-REGISTRATION FOR TRACTOR COURSE IS REQUIRED BY MARCH 11**, to McPherson County Extension, 620.241.1523; email [tregehr@ksu.edu](mailto:tregehr@ksu.edu)



## **TRACTOR SAFETY COURSE**

**May 21-23rd, 2019 8:00-11:00**

Location—Ag shop at Central Plains High School which is located just north of the high school building in Claflin.

Instructor—Jim Ryan

Please contact the Rice County Extension at 620-257-5131 to register before May 10th.

**Sponsored by : Rice County Farm Bureau Association**

## Food Preservation Newsletter

Karen Blakeslee invites you to read the January/February 2019 edition of Food Preservation news.



This newsletter is a joint effort between KSRE and University of Missouri Extension. The newsletter can be found at <https://www.rrc.k-state.edu/preservation/index.html> in the top right column. There is also an archive of past issues.

### Advanced Gardening for high school seniors

Heartland Farm is offering a workshop on Saturday May 11 8 am - 4 pm. You will start the day with an overview and then get to practice hands on gardening.

Topics covered: starting seeds, building compost, bed preparation, watering techniques, crop selection, transplanting and more.



Google "Heartland Farm Hands-on Workshops". The cost is \$10 which includes lunch.

### Volunteer Screening Reminders

Please remember we need all parents and leaders working with youth to complete the Volunteer Screening process. If you have not done so please go to: <https://ks.4honline.com/> and log in to your families profile and sign up as a volunteer leader. On the second page of the 4-H online enrollment you will

click "direct volunteer" and then right below this is a place to click "here" and complete the 4-H service application OR to complete a renewal form. Quick and easy! Each year, leaders must re-enroll online to continue as a leader, just as members do.

### Volunteer Screening Policy and Procedures

4-H Volunteer screening must be completed by any individual who works in close, ongoing interaction with youth or any adult or youth with authority to independently plan and conduct 4-H educational experiences for youth. This includes community leader, project leader (both club and countywide), activity leader, judging team coach, overnight event chaperones, chauffeur drivers for any 4-H activity and camp counselors. For new volunteers: The first step is to fill out the volunteer form, complete an interview, then attend a Volunteer training or take the online training. The next step will be to complete a background check online. The office can send you a link. An email address is needed to receive the secure link from Validity. Then the Board must approve you. Continuing volunteers must submit a renewal form every year or the volunteer will have to start the process over. Currently a background check will have to be completed every three years. All new leaders and camp counselors will have to complete the process.

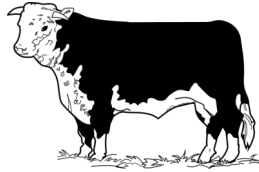
## Project Meetings and Leaders

The number one reason youth join 4-H is to learn a new skill. Project meetings are the very best way to learn about a new project. Are you a project leader or would you consider serving as a project leader? How do you get started? One place to start is to find out what leaders are needed. It might be possible for you to invite just a few members to join your own club for a project learning experience. There are some projects that have lower enrollment and a county-wide project group would be beneficial.

## Livestock and Ag

### Beef Weigh-In - Feb. 27th.

The beef weigh-in for market beef animals will be held Wednesday, Feb. 27 at Lyons Vet Clinic from 3:00-6:00 pm. All market beef animals must be weighed in on this official weigh-in date. If your family has a conflict, please work with another family in your club and see if they can help you out.



All market animals going to the KJLS and KSF will be required to have EID tags. PLEASE let us know if you will be taking your beef animal on to KSF or KJLS so the correct eartag is used.

### Deadlines for Livestock for 4-H Shows

May 1 : Beef DNA samples due for

KJLS and KSF, Horse I.D.s and Vaccine Forms Due

June 15 : DNA samples for swine, sheep and goats due for the KSF and KJLS

July 15 : Entry deadline for the Kansas State Fair for Beef, Sheep, Swine and Goats

August 1 - Entry deadline for KJLS  
More info at  
[www.youthlivestock.ksu.edu](http://www.youthlivestock.ksu.edu)



### Market Hogs and Market Sheep

If you have questions about where to get lambs or pigs for the market project, you may want to visit with livestock project leaders in your 4-H club. We also get some information in the office on club sales that some individuals send us.

### Sheep, Goat Weigh-In

#### April 15th

The sheep, goat weigh in will be held at the Celebration Centre on Monday, April 15th from 3:00-6:00pm. All market sheep and goats must be weighed in on this official weigh in date. Swine tags must be turned into the office on this date also.

### GOAT MEMBERS:

Kay Winford has some boar bucklings for sale if you are looking for meat goats for the fair. Her daughter is a Rice Co 4-H Alum. [kwinford1@wildblue.net](mailto:kwinford1@wildblue.net) or call 785-230-2543

## Discovery Days - Change in Schedule!

Discovery Days 2019 - Discover Your Spotlight will be May 29-31, 2019. This year the Discovery Days Task Force has made the decision to have Discovery Days become a 3 day, 2 night event. They hope that the shorter schedule as well as the cost to attend will encourage more youth to come to this event. This means that the schedule and class times have changed! Make sure to check out the website for Discovery Days at <http://www.kansas4-h.org/events-activities/conferences-events/discovery-days/index.html>.



**Discovery Days registration for "Discover Your Spotlight" will be opening on March 1, 2019.** Registration will then close April 15 at midnight.



**Kansas Junior Swine Producer Day**

The Kansas Junior Swine Producer Day is scheduled for Saturday, March 9, 2019 in Weber Arena on the K-State campus in Manhattan. This one-day educational event is devoted to the selection and management of youth swine projects. All ages and knowledge levels are invited! K-State faculty members, graduate students, and guest speakers will cover topics including selection, meat science, ear notching, breeds, the state nomination process, herd health, nutrition, and showmanship. An optional instructor-led YQCA session will also

be held at the conclusion of the program (approx. 2:30pm).

The cost for Junior Swine Producer Day is \$15/person, if registration is submitted by February 15, 2019, or \$20/person after the early deadline. All attendees, including youth and adults, must register. All participants who sign up by February 15 will also receive a t-shirt. Families may register online at <http://bit.ly/ksuasiregister>, or by downloading the flyer (<http://bit.ly/ksujrproducerdays>), completing the bottom portion of the flyer and mailing it, with payment, to the K-State Youth Livestock Program. Those who indicate they would like to participate in the optional YQCA certification will receive additional details and instructions via email in late February. For more information, please contact Lexie Hayes at [adhayes@ksu.edu](mailto:adhayes@ksu.edu) or Joel DeRouchey at [jderouch@ksu.edu](mailto:jderouch@ksu.edu).

## Kansas Junior Meat Goat Producer Day

Kansas Junior Meat Goat Producer Day will be hosted on Saturday, March 30, 2019 in Weber Arena on the K-State campus in Manhattan. This one-day educational event is devoted to the selection and management of youth meat goat projects. All ages and knowledge levels are invited! K-State faculty members, graduate students, and guest speakers will cover topics including selection, meat science, nutrition,

the state nomination process, herd health, reproduction, health and wellness, facilities and equipment, and showmanship. An optional instructor-led YQCA session will also be held at the conclusion of the program (approx. 2:30pm).

The cost for Junior Meat Goat Producer Day is \$15/person, if registration is submitted by March 11, 2019, or \$20/person after the early deadline. All attendees, including youth and adults, must register. All participants who sign up by March 11 will also receive a t-shirt. Families may register online at <http://bit.ly/ksuasiregister>, or by downloading the flyer (<http://bit.ly/ksujrproducerdays>), completing the bottom portion of the flyer and mailing it, with payment, to the K-State Youth Livestock Program. Those who indicate they would like to participate in the optional YQCA certification will receive additional details and instructions via email in late March. For more information, contact Lexie Hayes at [adhayes@ksu.edu](mailto:adhayes@ksu.edu).

The KSU Sheep & Meat Goat Center will also be hosting their annual sale following the junior day program. They are separate events, but the schedule will allow families who would like to attend both events to do so.

## **Kansas 4-H Dog Care & Training News**

By Deryl Waldren



## **-Kansas 4-H Dog Conference Theme Logo Design Contest**

The Kansas 4-H Dog Conference logo design contest is open to all dog project members. Designs are needed for the 2019 theme "Rock Star 4-H Dogs." Designs must reflect this dog rock star theme and be submitted electronically in a JPG format. PDF submissions will not be accepted. The winning logo design, with professional modifications, will be used for promotional efforts including t-shirts. The winning entry will receive a complimentary registration to the 2019 Kansas 4-H Dog Conference, October 19-20, 2019, Rock Springs 4-H Center. There is no cash value. Entries must be received electronically by Friday, March 15. Questions may be directed to Deryl Waldren at [dwaldren@ksu.edu](mailto:dwaldren@ksu.edu), or 785-462-6281.

## **-2019 Kansas State Fair 4-H Dog Show Qualification**

Just a reminder that 4-H members in order to participate in the 2019 Kansas State Fair 4-H Dog Show, in Hutchinson, on Saturday, September 14th, must have qualified in a specific discipline(s) at a state qualifier 4-H or open dog show during the 2018-19 4-H year. Dog members cannot just register for the KSF 4-H Dog Show without first qualifying every year. The disciplines are showmanship, obedience, agility and rally obedience. Most of these qualifier dog shows happen during county

fairs or invitational dog shows during spring and summer. Later this winter and spring, visit here for a listing of dog shows open to 4-H members to qualify for the 2019 KSF 4-H Dog Show: <http://www.kansas4-h.org/events-activities/conferences-events/dog/local-dog-shows.html>.

### **Bill Cordes Is the Speaker for the 2019 Kansas 4-H Ambassador Training**



Bill Cordes from Lawrence is the 2019 Kansas 4-H Ambassador training keynote speaker. Since 1988, Bill Cordes has keynoted programs for conferences, conventions, schools and universities nationwide. He has authored and co-authored 6 books for teens and college students. In his programs, Bill combines humor, energy, enthusiasm and wisdom to create an engaging experience that promotes "better ways to live our days". Bill is a former, teacher, coach, and television talk show host.

The 2019 Kansas 4-H Ambassador Training will be February 22-23 at the Rock Springs 4-H Center near Junction City. It is open to all county/district 4-H ambassadors, interested teens, ambassador advisors and Extension staff. The ambassador training is open to any 4-H member in the 8th – 12th grades. Local Extension offices may not be able to provide chaperones and/or transportation to this training. Check with your local Extension office before registering.

The theme is "4-H Ambassadors Go Wild with Leadership." There will be six youth workshops, three adult workshops, two speakers, with lots of fun and fellowship. Workshops to

be offered include:

- True Colors, 1st Year Only - Learn about the four color personalities of green, blue, gold and orange. Discover your primary color and what it means.
- Wild about Leadership, 1st Year Only – Knowing your leadership style will help you learn about collaborating for self, others and your community.
- Elephant Communications, 1st Year Only – Learn basic communication skills that you need to know to be an effective county/district ambassador.
- Navigating the Jungle of First Impressions, 2nd year and Up – Learn how to make your first impression count with others as you apply for and interview for positions, awards and jobs.
- Day Camp Craziiness, 2nd Year and Up – Learn about and experience new hands-on and fun ideas, activities, etc., to do with kids in a variety of 4-H day camps. These are all new ideas and activities in 2019. Handouts provided.
- Advanced True Colors, 2nd Year and Up – Learn how to make your primary color complement better within your team's color palette.
- Advisors' Workshop: Tips for a Great Program and Round Table– County/District advisors will get tips on how to effectively work with Ambassador teams, along with a round table discussion.
- Advisors': Making Quality Video Clips for 4-H, in a 2-part workshop – Learn how to make video clips to target market your 4-H program.

Full details are posted on the Kansas 4-H web site, <http://www.kansas4-h.org/events-activities/conferences-events/ambassador-training/index.html>. Registration is currently

open. Visit: <http://www.kansas4-h.org/events/index.html>. Cost is \$115, and covers all educational sessions, speakers, breakfast, lunch, breaks, and one night's lodging at Rock Springs 4-H Center. Registration will close on Sunday, February 10, 11:59 p.m. For cancellations from the time of registration through February 10th, there will be a \$25 fee assessed. Beginning on February 11th, there are no refunds, and the full cost of the conference will be due. The Kansas 4-H Ambassador Action Team accepts members (teens, volunteers and Extension staff) year-round. For more information, please call Deryl Waldren at 785-462-6281, or e-mail him at [dwaldren@ksu.edu](mailto:dwaldren@ksu.edu)

For More information on 4-H Programs and Activities you can visit <https://www.kansas4-h.org/tipsheet/>



- February 1 State 4-H Scholarship Applications due
- February 1 CIA registration closes
- February 4 YQCA 7:00
- February 13 4-H Club Day Applications due
- February 11 Cloverbuds @ 6:15
- February 17-18 CIA
- February 18 4-H Club Day Lyons

- High School @ 5:00
- February 18 Extension office will be closed
- February 22-23 4-H Ambassador Training, Rock Springs
- February 22-23 4-H Ambassador Training, Rock Springs
- February 24 Club Day Snow Date.
- February 27 Beef Weigh In 3:00—6:00 Vet Clinic
- March 1 Camp Enrollment opens
- March 8 Regional 4-H Day, Great Bend
- March 9 Jr. Swine Producer Day
- March 11 Cloverbuds @ 6:15
- March 23 Super 4-H Saturday, Hays
- March 30 Jr Meat Goat Producer Day
- April 1 Add Drop Day
- April 4-7 Kansas Shooting Sports training at Rock Springs
- April 8 Cloverbuds @ 6:15
- April 13 Spring State Shoot
- April 15 4-H Discovery Days Registration Due
- April 15 Sheep Goat Weigh In. Swine tags are Due.
- May 1 Camp Counselor applications Due  
Horse ID's Due
- May 6 Camp Registration Closes
- May 13 Cloverbuds @ 6:15
- May 21-23 Tractor Safety @ Claflin



June 1 Fair Pre-registration begins

June 13 Camp Counselor Training Rock Springs

June 14-17 OzSome Camp Rock Springs

June 21 PRE-FAIR ENTRIES ARE DUE

June 21-22 Insect Spectacular at Wetlands Education Center

June 23-26 Campference

July 1 Club Secretary Books are due

July 11 Fair Set up Arena Celebration Centre

July 10 BBQ tickets are due

July 12 Pre-Enter Hort, Crops, Open entry

July 13 Fashion Revue, Clothing Construction, Fiber Arts Judging Extension Bldg

July 15 Check in at the Celebration Centre

6:00 Pedal Pull

5:30-7:30 Livestock Weigh-in

Kansas State Fair Livestock Entries due

July 16 8:00 Sheep and Goat Judging

6:30 Bucket Calf, Heifer, Market Beef Judging

July 17 8:00 Swine Judging

10:30 Livestock Sale Committee Meeting

5:00 BBQ

7:00 Auction

July 18 Fashion Revue, Awards Night

August 8 State Wheat Expo Kingman

August 9 Kansas State Fair Pre-Entries Due

August 24 State Livestock Judging

State Horticulture Judging

October 1 Ks 4-H enrollment begins

October 6-12 NATIONAL 4-h Week

October 12-13 48 Hours of 4-H

These dates are tentative and subject to change. If you have a question please call us at the Extension Office and we will try to give you the correct information.

Thanks!



FOR YOUR INFORMATION

We have been updating both the Rice County Extension Web page and the 4-H Facebook page. We have KAP links, Scheduled Events, Fair Schedules up running. You can also check out past newsletters.

If there are any changes to your club information please let us know so that we can have the correct information reflected on our web page.